



Creststreet Alternative Energy Fund

January 2009

Net Asset Value Per Share

January 31, 2009: **\$34.0420**

Fund Description

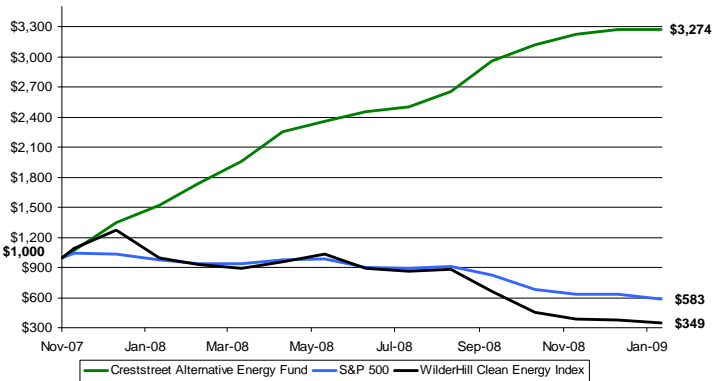
The Creststreet Alternative Energy Fund (the "Fund" or "CAEF") provides Canadian investors with exposure to a broad array of investments in sub-sectors of the energy market outside of conventional oil and natural gas. The investment objective is to provide stable long-term growth of capital while conservatively managing value at risk. The Fund invests primarily in securities of North American issuers whose businesses exploit opportunities to generate energy beyond what traditional dependence on carbon-emitting sources supply.

Historical Performance ⁽¹⁾

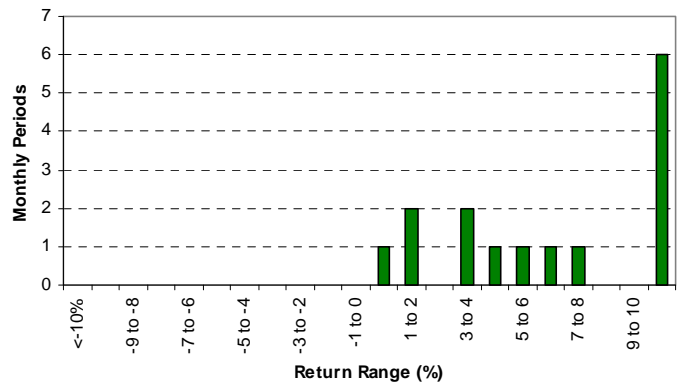
| Year | Jan | Feb | Mar | Apr | May | Jun | Jul | Aug | Sep | Oct | Nov | Dec | YTD |
|------|-------|-------|-------|-------|------|------|------|------|---------|------|------|-------|--------|
| 2007 | | | | | | | | | | | 7.6% | 25.3% | 34.8% |
| 2008 | 12.6% | 14.5% | 12.9% | 14.9% | 4.7% | 3.8% | 2.0% | 6.4% | 11.3% * | 5.7% | 3.2% | 1.5% | 142.1% |
| 2009 | 0.1% | | | | | | | | | | | | 0.1% |

* Manager clarified performance fee calculation language in prospectus in favor of unitholders resulting in a +9.6% increase in NAV.

Performance ⁽¹⁾⁽²⁾



Distribution of Returns ⁽¹⁾



⁽¹⁾ Inception date of the Fund is November 21, 2007. The indicated rates of return are historical annual compound total returns and do not take into account sales, redemption, distribution or operational charges or income taxes payable by any security holder that would have reduced returns. Performance is calculated net of fees.

⁽²⁾ See Use of Benchmarks Disclaimer on page 3.

Statistics ⁽¹⁾⁽²⁾

| | CAEF | S&P 500 Index | WilderHill Clean Energy Index |
|--------------------------------------------|--------|---------------|-------------------------------|
| Compounded Annual Return (since inception) | 169.3% | -36.3% | -58.5% |
| 1 Year Return | 115.2% | -40.0% | -64.8% |
| Standard Deviation | 6.8% | 6.0% | 13.6% |
| R-Squared | | 0.05 | 0.09 |
| Correlation | | 0.23 | 0.29 |
| Beta | | 0.26 | 0.15 |
| Monthly Alpha | | 9.3% | 9.3% |
| Largest Month Gain | 25.3% | 4.8% | 16.1% |
| Largest Month Loss | n.a. | -16.9% | -32.1% |

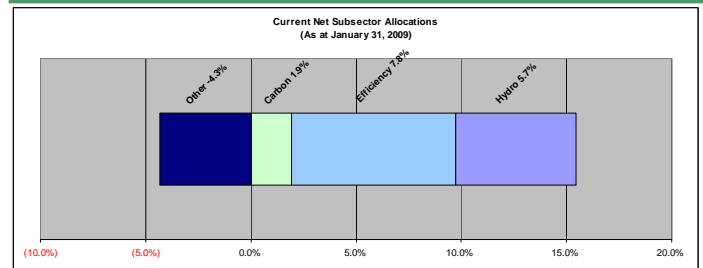
Terms

| | | | |
|-----------------|------------------------------------|-------------------------------|-------------|
| Fund AUM | \$23.6 M | Minimum Initial Subscription | \$ 1,000 |
| Performance Fee | 20% with hurdle rate above S&P 500 | Year End | December 31 |
| Management Fee | 2% | Redemptions and Contributions | Weekly |
| Administrator | RBC Dexia Investor Services | Pricing | Weekly |
| Type | North American Equity | Auditors | KPMG LLP |
| Fund Codes | CAM400, CAM401, CAM402 | RRSP / TFSA eligible | Yes |

Top Holdings as at January 31, 2009 ^{long positions only}

Great Lakes Hydro Income Fund Trust
 Comverge Inc.
 RuggedCom Inc.
 World Energy Solutions Inc.

Sub-Sector Allocation as at January 31, 2009



Fund Commentary

The Creststreet Alternative Energy Fund was up 0.1 percent during the month of January compared to the S&P 500 Index, which was down 8.6 percent for the month, and the Wilderhill Clean Energy Index, which was down 8.0 percent.

Outlook

January saw continued uncertainty in financial markets as data releases reinforced overall global economic weakness. In the United States weak reports on employment and the housing market demonstrated the depths the recession had reached and culminated in a GDP report that showed an output contraction of 3.8% annualized in the fourth quarter, its steepest decline since 1981. Overseas, China's GDP showed a quarter on quarter contraction, several European countries reported increased unemployment and lower output, and Japan's manufacturing sector showed a decline indicative of a double digit contraction in GDP. In the face of such economic weakness and having exhausted the limits of traditional monetary policy, the Obama Administration has turned to fiscal policy to try and stimulate the economy and target the development of certain sectors domestically, **chief among them renewable energy**, making the sector an area likely to experience continued growth despite the gloomy macroeconomic outlook.

The draft version of the American Recovery and Reinvestment Act demonstrates a firm government commitment towards renewable energy. A key component includes grants and loans to states, municipalities, and utilities to modernize the electric grid. While short-term direct beneficiaries of these stimulus dollars will be confined to the demand response and energy efficiency space, longer term the addition of this infrastructure will improve the economics of several forms of renewable power production by enabling the transport of power over large areas and supporting storage within the grid. Separately, grants dedicated towards innovative technologies and the extension of renewable energy tax credits for investors and producers out to 2013-14 will provide greater stability for the sector.

Partially offsetting these positive developments is the continued weakness in natural gas prices. We believe that natural gas prices will remain depressed through much of 2010, potentially prolonging the recovery of solar and wind power project demand.. While we expect solar costs to decrease dramatically in the near term, ultimately we believe that cap and trade carbon emission legislation will be required in the United States to help level the playing field. We expect the new administration to table such legislation in the medium-term as a central deliverable of Obama's energy plan is the implementation of an economy-wide cap-and-trade program.

Fund Performance and Strategy

The Fund has remained cautious with regards to its equity exposure. During the month the Fund turned it's assets over ~0.5 times, while continuing to hold upwards of 80% cash. The Fund continues to trade actively within it's risk management parameters, but is in the early stages of transitioning towards a greater proportion of longer term market neutral trades aimed at benefiting from strong entry points in issuers poised to benefit from the US fiscal stimulus package.

Primary core position trades in the Fund included:

Exiting 5NPlus: While we continue to appreciate the exceptional financial position of the company, we believe the market has adequately reflected this fact over the past four months, with VNP outperforming the S&P500 by > 40%. We would look to re-establish this position on any relative weakness.

About Creststreet

Creststreet is a performance-driven investment management firm focused exclusively on the energy sector. Founded in 2000, our mission is to achieve **excellence in energy investing** through strong and consistent investment performance across all of our energy investment products for our Canadian and international institutional and high net worth investors.

Creststreet Asset Management Limited

70 University Avenue, Suite 1450
Toronto, Canada M5J 2M4
Tel: (416) 864-6330
Fax: (416) 862-8950
www.creststreet.com

Investor Inquiries

Grant Bunker
VP, Business Development
Tel: (416) 628-2161
gbunker@creststreet.com

Published February 6, 2009

This document is for information purposes only and does not constitute an offer to sell or a solicitation to buy the securities referred to herein. The opinions contained in this report are solely those of Creststreet Asset Management Limited ("CAML") and are subject to change without notice. CAML makes every effort to ensure that the information has been derived from sources believed to be reliable and accurate. However, CAML assumes no responsibility for any losses or damages, whether direct or indirect which arise from the use of this information. CAML is under no obligation to update the information contained herein. The information should not be regarded as a substitute for the exercise of your own judgment. Please read the prospectus before investing.

Commissions, trailing commissions, management fees and expenses all may be associated with this investment product. Please read the prospectus before investing. Mutual funds are not guaranteed, their values change frequently and past performance may not be repeated. The indicated rates of return are the historical annual compound total returns including changes in share value and reinvestment of all distributions and does not take into account sales, redemption, distribution or operational charges or income taxes payable by any security holder that would have reduced returns. Performance is calculated net of fees. The rate of return table shown is used only to illustrate the effects of the compound growth rate and is not intended to reflect future values of the mutual fund or returns on investment in the mutual fund.

*Creststreet Alternative Energy Fund is managed by Creststreet Asset Management Limited, a wholly owned subsidiary of Creststreet Capital Corporation. *Creststreet® and the Creststreet logo are registered trademarks of Creststreet Capital Corporation.*

THE CRESTSTREET ALTERNATIVE ENERGY FUND IS AVAILABLE TO CANADIAN INVESTORS ONLY

Entering RuggedCom: Another company with an exceptional balance sheet as well as a tremendous growth opportunity arising from the US fiscal stimulus spending. We anticipate that it may take some time for the market to recognize and appropriately value this company, and plan to hold the position until this occurs.

At some point, the extent of the economic weakness will become priced into the market and stocks will find a bottom. As we approach this point, the Fund will begin taking on long market exposure in some of the world's leading alternative energy companies, particularly those we identify as beneficiaries of government fiscal stimulus.

Use of Benchmarks - Wilderhill Clean Energy Index (WCEI) is comprised of North American renewable energy companies and is used as a benchmark to show how the Fund is performing in relation to a basket of similar companies to those in which the Fund invests. The S&P 500 is comprised of 500 U.S. large cap companies and is used as a benchmark to show how the Fund is performing in relation to the broader North American market on a relative basis.

About Creststreet

Creststreet is a performance-driven investment management firm focused exclusively on the energy sector. Founded in 2000, our mission is to achieve **excellence in energy investing** through strong and consistent investment performance across all of our energy investment products for our Canadian and international institutional and high net worth investors.

Creststreet Asset Management Limited

70 University Avenue, Suite 1450
Toronto, Canada M5J 2M4
Tel: (416) 864-6330
Fax: (416) 862-8950
www.creststreet.com

Investor Inquiries

Grant Bunker
VP, Business Development
Tel: (416) 628-2161
gbunker@creststreet.com

Published February 6, 2009

This document is for information purposes only and does not constitute an offer to sell or a solicitation to buy the securities referred to herein. The opinions contained in this report are solely those of Creststreet Asset Management Limited ("CAML") and are subject to change without notice. CAML makes every effort to ensure that the information has been derived from sources believed to be reliable and accurate. However, CAML assumes no responsibility for any losses or damages, whether direct or indirect which arise from the use of this information. CAML is under no obligation to update the information contained herein. The information should not be regarded as a substitute for the exercise of your own judgment. Please read the prospectus before investing.

Commissions, trailing commissions, management fees and expenses all may be associated with this investment product. Please read the prospectus before investing. Mutual funds are not guaranteed, their values change frequently and past performance may not be repeated. The indicated rates of return are the historical annual compound total returns including changes in share value and reinvestment of all distributions and does not take into account sales, redemption, distribution or operational charges or income taxes payable by any security holder that would have reduced returns. Performance is calculated net of fees. The rate of return table shown is used only to illustrate the effects of the compound growth rate and is not intended to reflect future values of the mutual fund or returns on investment in the mutual fund.

*Creststreet Alternative Energy Fund is managed by Creststreet Asset Management Limited, a wholly owned subsidiary of Creststreet Capital Corporation. *Creststreet® and the Creststreet logo are registered trademarks of Creststreet Capital Corporation.*

THE CRESTSTREET ALTERNATIVE ENERGY FUND IS AVAILABLE TO CANADIAN INVESTORS ONLY