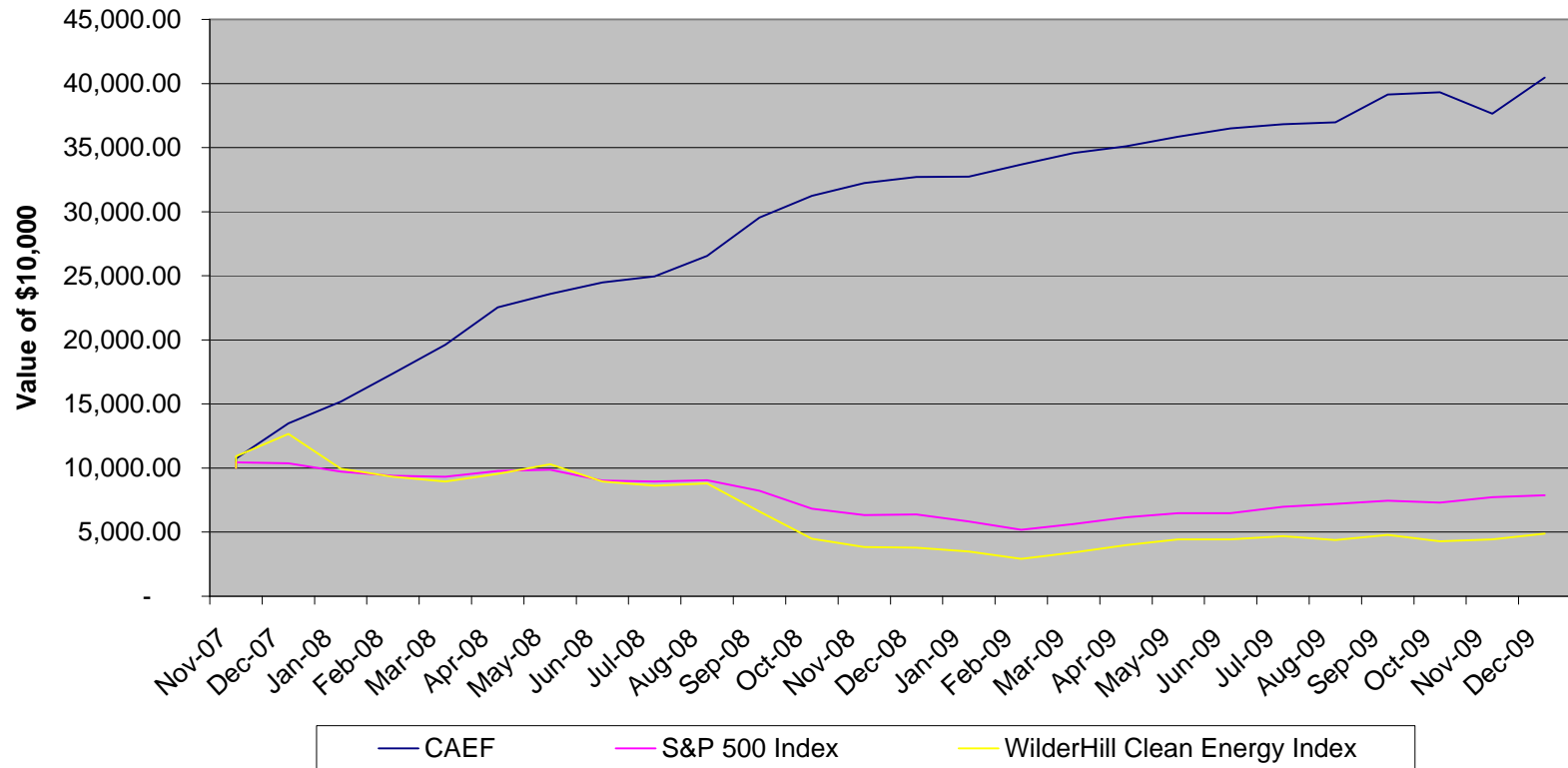
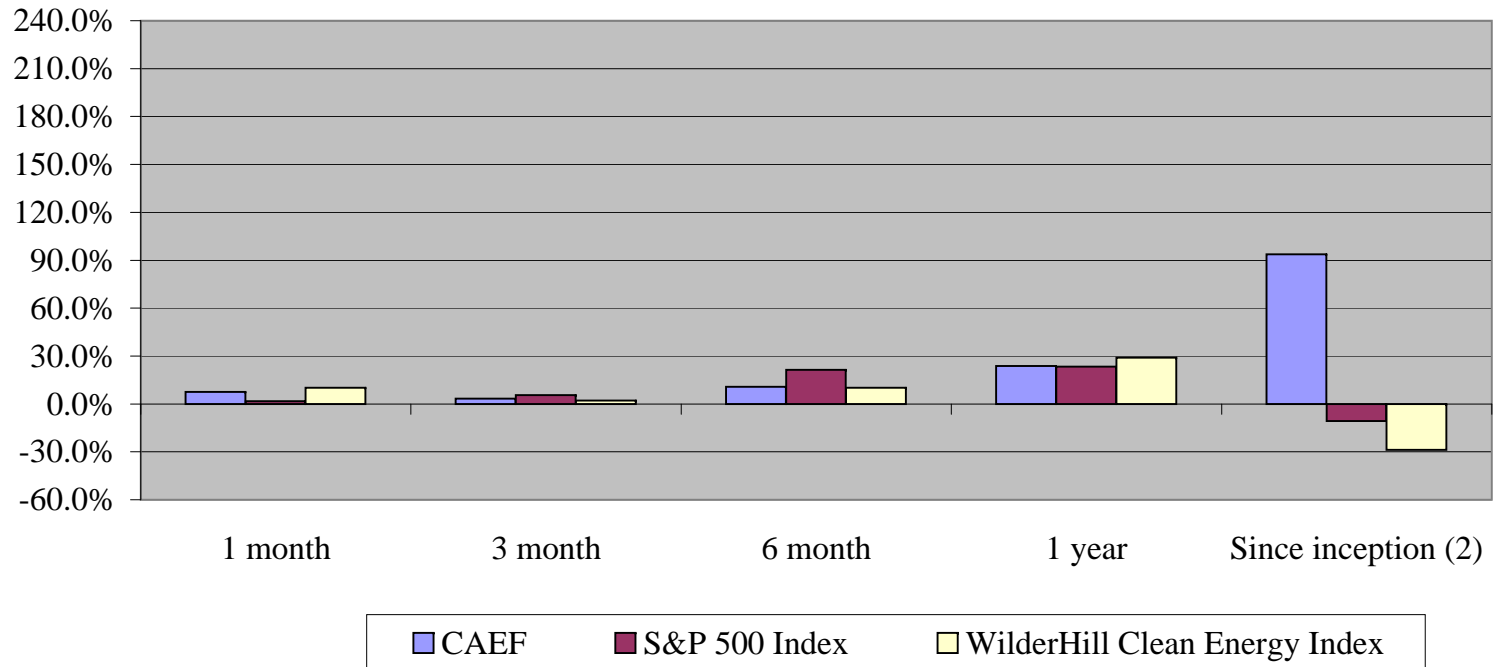


**Creststreet Alternative Energy Fund
Relative Performance to the S&P 500 Index
November 21, 2007 to December 31, 2009
(Month-end values assuming all distributions are reinvested into the Fund)**



Creststreet Alternative Energy Fund
Rates of Return ⁽¹⁾
As at December 31, 2009



(1) Rates of return are calculated assuming distributions are reinvested into the Fund.
(2) "Since inception" means since the date the Fund became a reporting issuer on November 21, 2007.