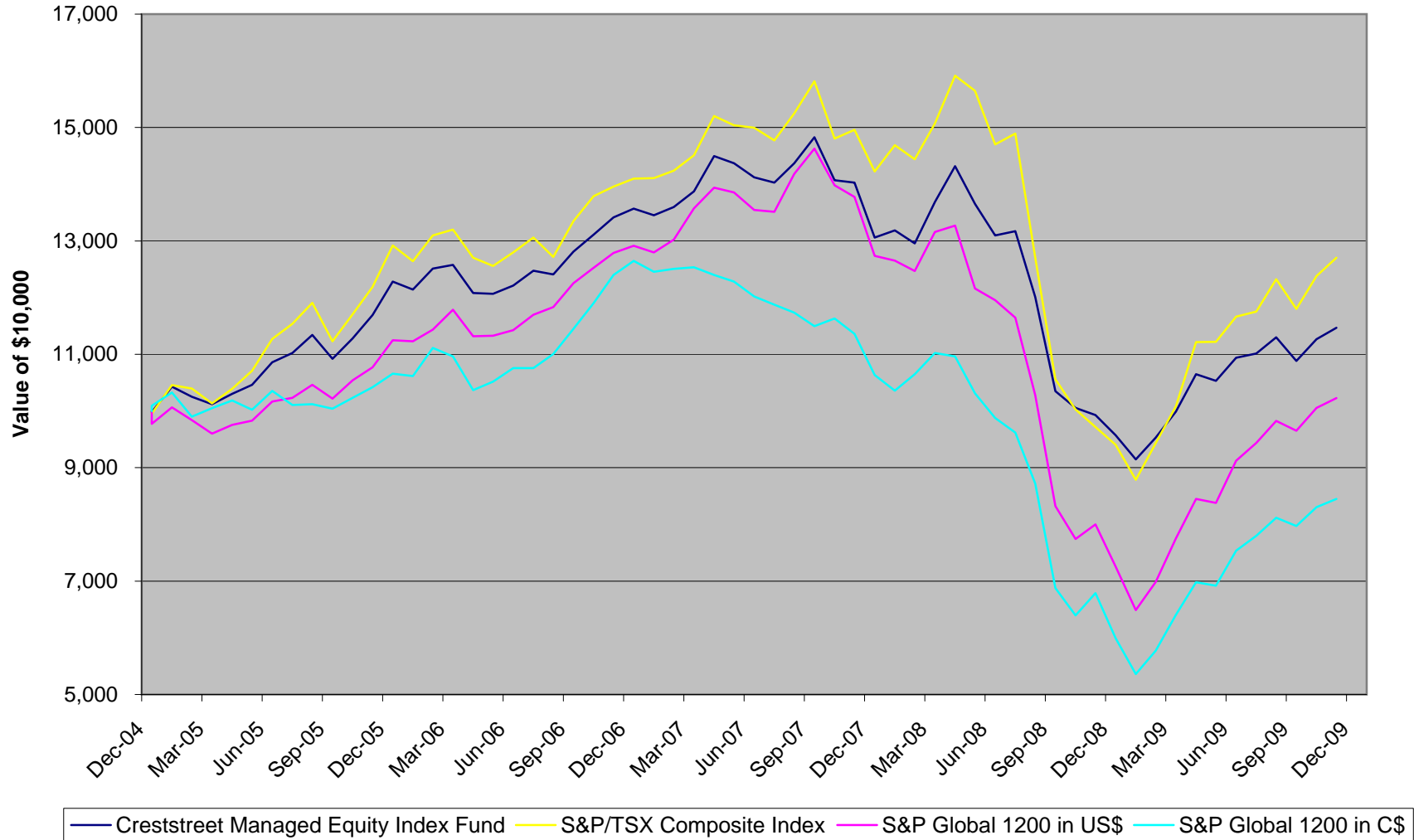
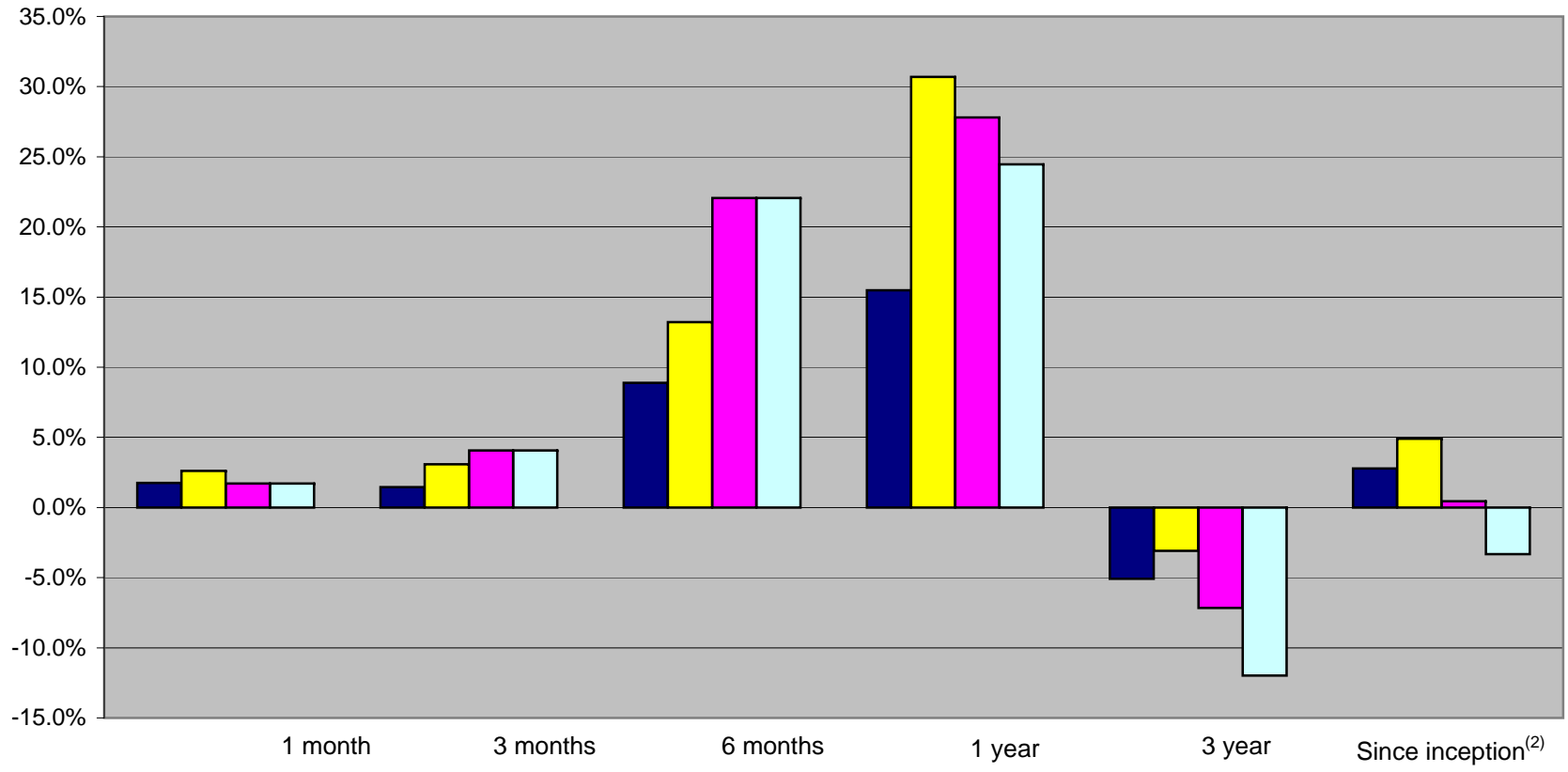


**Creststreet Managed Equity Index Fund
Relative Performance to the
S&P/TSX Composite Index and the S&P Global 1200 Index
from December 31, 2004 to December 31, 2009
(Month-end values assuming all distributions are reinvested into the Fund)**



**Creststreet Managed Equity Index Fund
Rates of Return ⁽¹⁾
As at December 31, 2009**



Creststreet Managed Equity Index Fund
 S&P/TSX Composite Index
 S&P Global 1200 in \$US
 S&P Global 1200 in \$C

(1) Rates of return are calculated assuming distributions are reinvested into the Fund.

(2) "Since inception" means since the date the Fund became a reporting issuer on December 31, 2004.