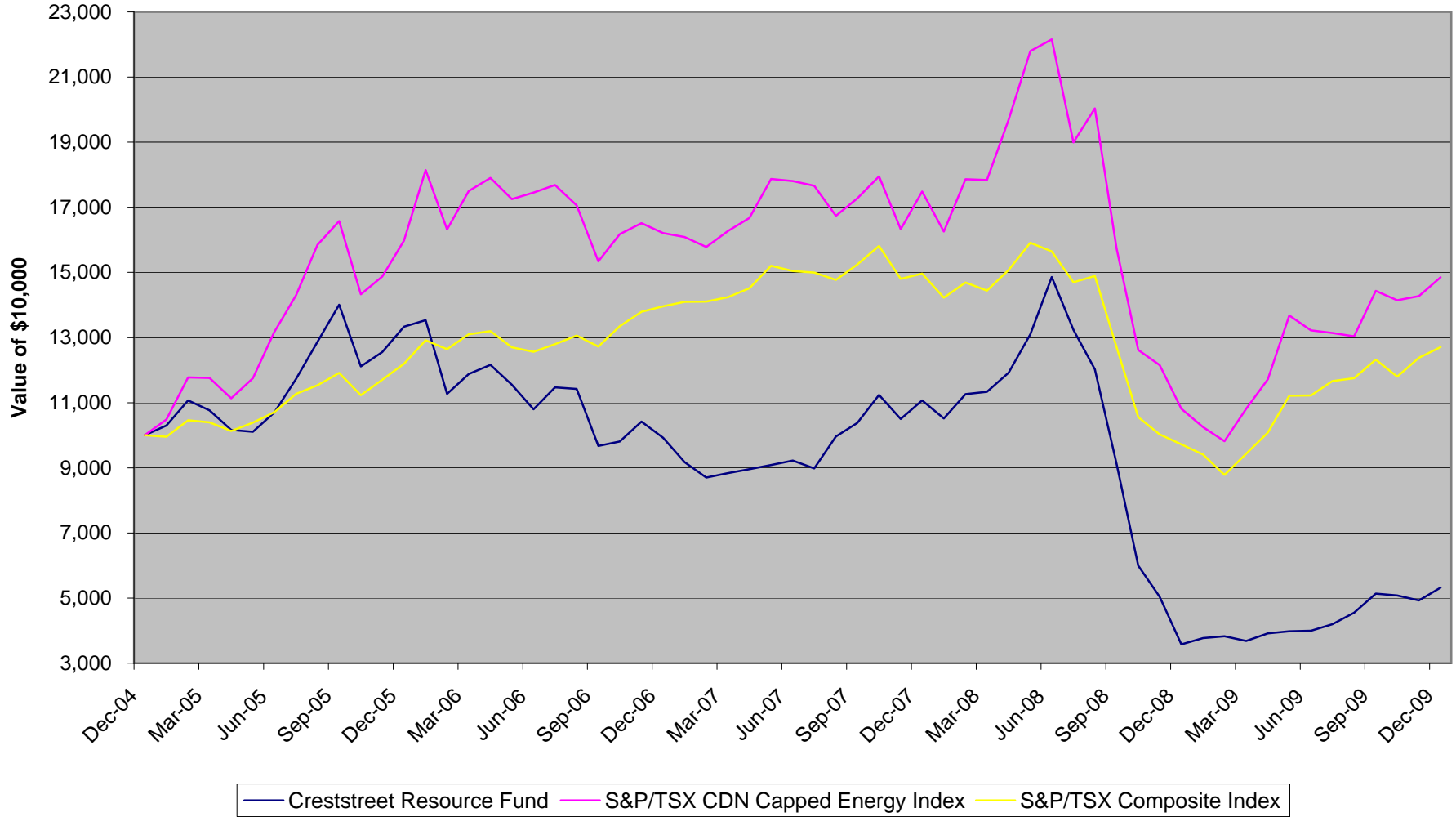
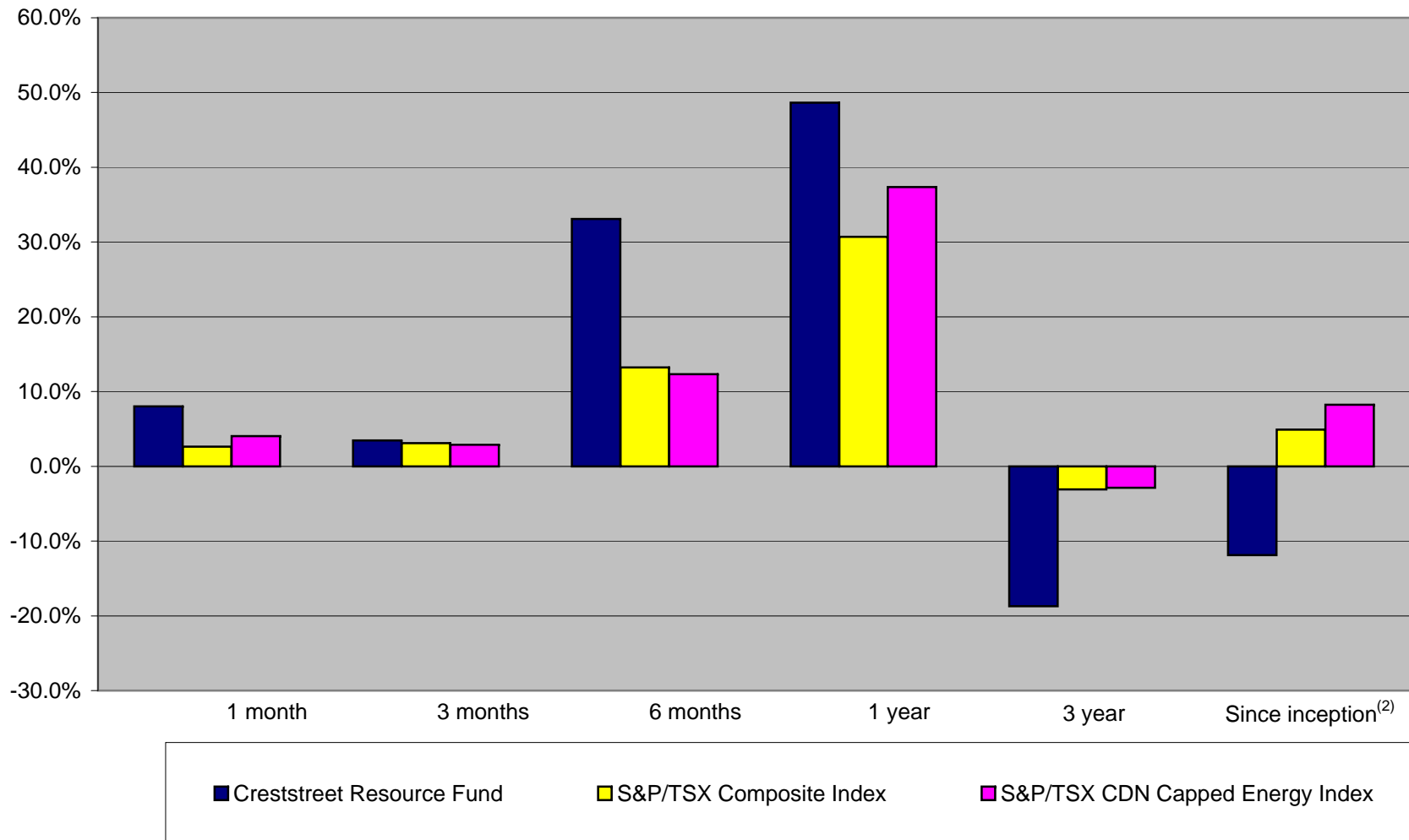


**Creststreet Resource Fund  
Relative Performance to the  
S&P/TSX Composite Index and the S&P/TSX CDN Capped Energy Index  
from December 31, 2004 to December 31, 2009  
(Month-end values assuming all distributions are reinvested into the Fund)**



**Creststreet Resource Fund**  
**Rates of Return<sup>(1)</sup>**  
**As at December 31, 2009**



(1) Rates of return are calculated assuming distributions are reinvested into the Fund.

(2) "Since inception" means since the date the Fund became a reporting issuer on December 31, 2004.